

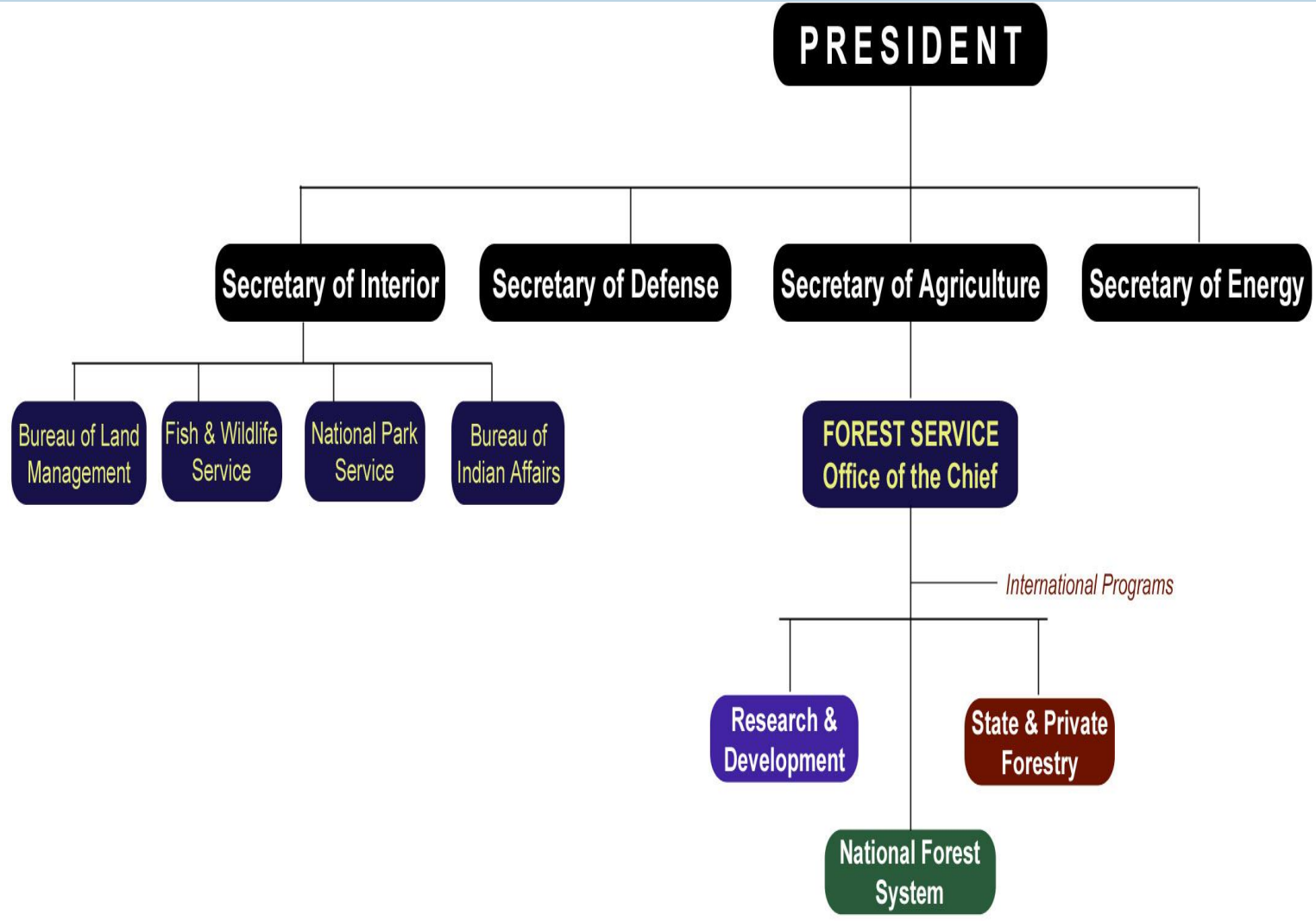


Forest Service and USDA Resources for Tribal Community Tourism Projects



Toby Bloom
National Program Manager- Travel, Tourism and Interpretation
Recreation, Heritage and Volunteer Resources
US Forest Service
tobybloom@fs.fed.us

Federal Land Management Agencies



Office of Tribal Relations



- *Supporting Sovereignty through Shared Stewardship*
- Create resilient ecosystems through on-the-ground, community-based projects.
- Collaborate in ways that build commitment to partnership and ownership of the results.
- Find common interests and leverage resources to get work done.



www.fs.fed.us/spf/tribalrelations

USFS Heritage Program (Within RHVR)



- 430 archaeologists
- Most of our archaeologists are also tribal liaisons
- Database with over 410,000 known sites
- All of our National Forests and Grasslands were once Tribal lands
- Next Exit History App

<https://www.youtube.com/watch?v=jPHvzz11KoM>

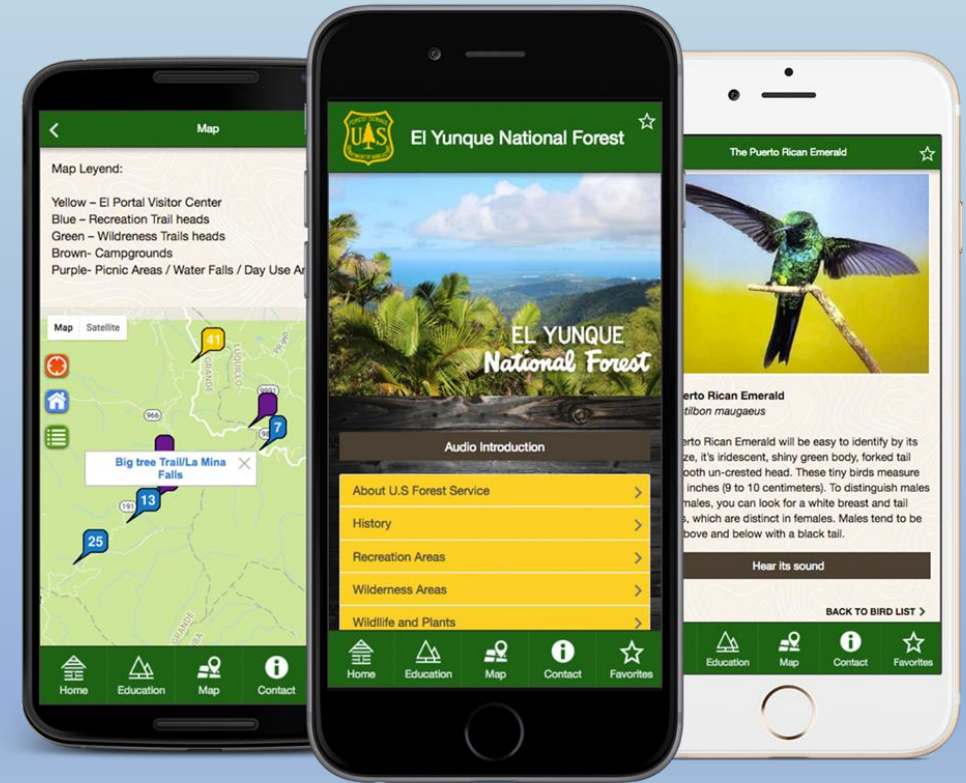


USFS Mobile App- At a Forest Near You!



Chattahoochee-Oconee National Forests
Nez Perce-Clearwater National Forests
Arapaho and Roosevelt National Forests
and Pawnee National Grassland
Pike-San Isabel National Forests and
Cimarron-Comanche National Grasslands
San Juan National Forest
White River National Forest
Medicine Bow-Routt National Forests
and Thunder Basin National Grassland
Columbia River Gorge NSA
Apache-Sitgreaves National Forests
Carson National Forest
Coconino National Forest
Coronado National Forest
Gila National Forest
Kaibab National Forest
Lincoln National Forest
Santa Fe National Forest
Tonto National Forest
Humboldt-Toiyabe National Forest
Cleveland National Forest

Sequoia National Forest
Shasta-Trinity National Forest
Mt. Hood National Forest
Gifford Pinchot National Forest
Mt. Baker-Snoqualmie National Forest
Ouachita National Forest
Osceola National Forest
Daniel Boone National Forest
El Yunque National Forest
George Washington & Jefferson National
Forests / Mount Rogers National
Recreation Area
Pisgah National Forest
Chequamegon-Nicolet National Forest
Chippewa National Forest
Mark Twain National Forest
Midewin National Tallgrass Prairie
Shawnee National Forest
Wayne National Forest
Northwest Research Station - Hubbard
Brook Experimental Forest
Chugach National Forest
Tongass National Forest



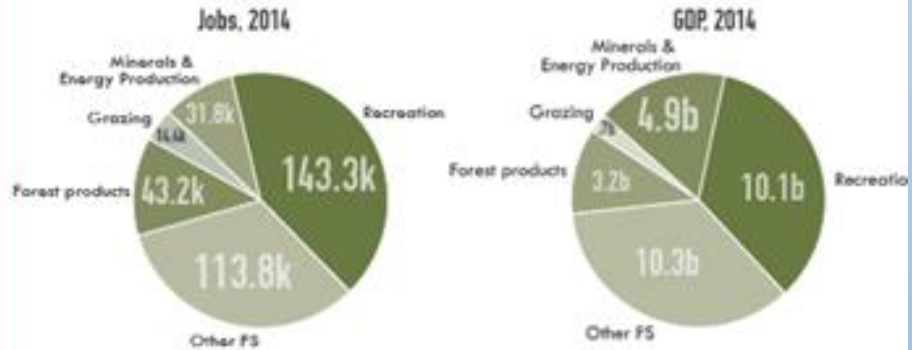
Usfs.oncell.com
Search “USFS Tours”
How to use the app:
<https://youtu.be/Fbb4XqhFLn8>

FS/RD Initiative: Strengthening Recreation Economies in Forest Gateway Communities

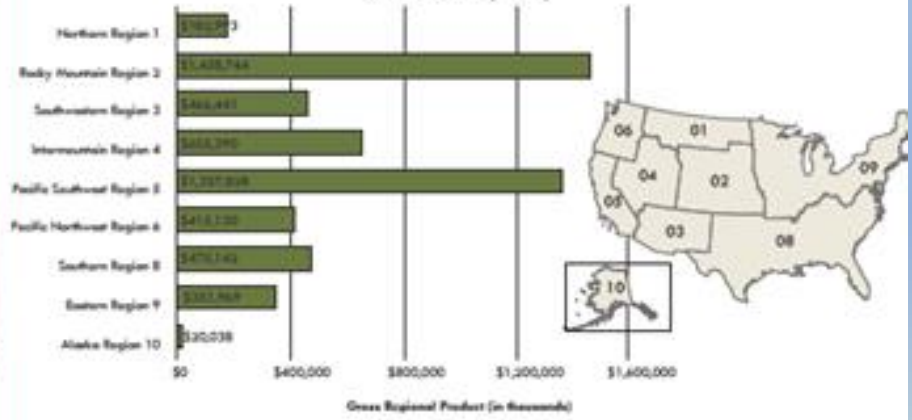


Recreation is big business. In a 2012 report, the Outdoor Industry Association found the national "outdoor economy" generates \$1.6 trillion of economic activity from the \$645.6 billion spent by consumers. In 2012, hundreds of millions of recreational visits to public lands and waters supported 880,000 jobs and generated \$51 billion in direct spending in local communities.

Outdoor economy spending directly supports 6.1 million American jobs, from outdoor gear manufacturers and retailers to outfitters and guides. Visitors to our parks and public lands are not only enjoying the bounty of our natural resources, but also promoting jobs and growth.



National Forest System recreation creates jobs and significantly contributes to the U.S. GDP (2015)



National Forest lands support over 7,000 outfitters and guides many of which are small businesses providing jobs and income. Their continued stability and presence creates tourism-oriented identities for the local areas in which they operate. These permits provide access to public lands which many people would not otherwise have.



Rural counties with a land base of more than 30% public lands experienced 345% job growth over the past 40 years. By comparison, similar counties with no public lands saw jobs increase by only 83% over the same 40-year period.



85% of travelers to National Forest lands came for the recreation opportunities. More than half of visits to national forests are from people who live within 50 miles of the forest.



Strength of the Forest Service- An Engaged Public



2012 Planning Rule

- addresses social and economic sustainability
- ecosystem services
- multiple uses
- social and economic benefits for present and future generations
- required to engage the public “using collaborative processes where feasible and appropriate.”

How do we interact with the public?

- public meetings and workshops
- public comment periods
- targeted outreach efforts to federally recognized Tribes, youth, new audiences, permittees, and neighboring landowners
- Coordination with State governments and other entities



Rural Development Offices



A screenshot of the USDA Rural Development website. The page is titled 'Browse by State' and features a map of the United States with states color-coded by region. The regions are: North East (orange), South (green), Mid West (blue), and West (orange). Below the map are three buttons: 'Check Eligibility', 'Lender Portal', and 'Home Loan Servicing'. The footer contains various links including 'FOIA', 'Accessibility Statement', 'Privacy Policy', 'Non-Discrimination Statement', 'Information Quality', 'RD Recovery', 'FirstGov', and 'White House'.

Regional CED Coordinators:

North East: Angela Callie
angela.callie@usda.gov

South: Greg Dale
gregory.dale@usda.gov

Mid West: Christine Sorensen
christine.sorensen@usda.gov

West: Tim O'Connell
Tim.Oconnell@wdc.usda.gov

<http://www.rd.usda.gov/browse-state>

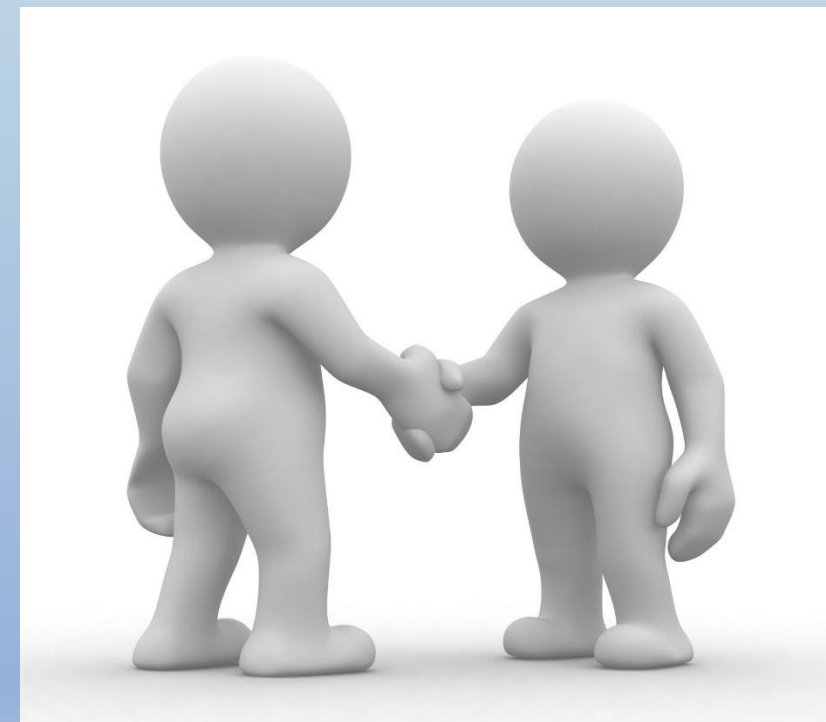
CED Staff Contact: https://www.rd.usda.gov/files/RBS-CEDNationalContacts_Region.pdf



Examples of RD Programs Supporting Recreation and Tourism Projects



- **Technical Assistance Through Cooperative Agreements:** Stronger Economies Together, Local Food Local Places, Cool and Connected
- **Grant Programs:** Community Facilities, Water Environment Programs, Rural Business Development Grants, Rural Cooperative Development Grant, Rural Micro-entrepreneur Assistance Program, Community Connect
- **Loan and Loan Guarantee Programs:** Business and Industry Loan Guarantee, Community facilities Loan and Loan Guarantee, Water Infrastructure programs, Telecommunication Infrastructure Loans and Loan Guarantees, Intermediary Relending Program



Rural Development

What these collaborations can look like when they work...



<https://www.youtube.com/watch?v=eXRJkpAAJBI>

NIFA Capacity Funding



- **McIntire-Stennis Capacity Grant**
 - <https://nifa.usda.gov/program/mcintire-stennis-capacity-grant>
 - **Example:** The role of forest resources to support improved sustainable livelihoods in rural communities
- **The Hatch Act of 1887 (Multistate Research Fund)**
 - <https://nifa.usda.gov/program/hatch-act-1887-multistate-research-fund>
 - **Example:** Outdoor Recreation, Parks and Other Green Environments: Understanding Human and Community Benefits and Mechanisms
- **Evans-Allen Capacity Grant**
 - <https://nifa.usda.gov/program/agricultural-research-1890-land-grant-institutions>
 - **Example:** Small Farm Agritourism as a Tool for Community Development in North Carolina



NIFA Competitive Funding



- **AFRI Foundational: Agriculture Economics and Rural Communities (Basic and applied)**
 - <https://nifa.usda.gov/funding-opportunity/afri-foundational-agriculture-economics-and-rural-communities>
 - **Example:** A multi-generational approach to increasing the resilience of agricultural, natural, and social landscapes
- **Small Business Innovation Research Phase I: Community & Rural Development (8.6)**
 - <https://nifa.usda.gov/funding-opportunity/small-business-innovation-research-program-phase-i>
 - FY18 proposals due 5 October
 - Increasing opportunities for employment and income generation in rural communities: Topics may include, but are not limited to, creative place making, recreational economies, rural tourism, agri-tourism, e-commerce innovations that connect producers with markets, and off-farm value-added agricultural development.





Thank you!

Questions/Discussion

