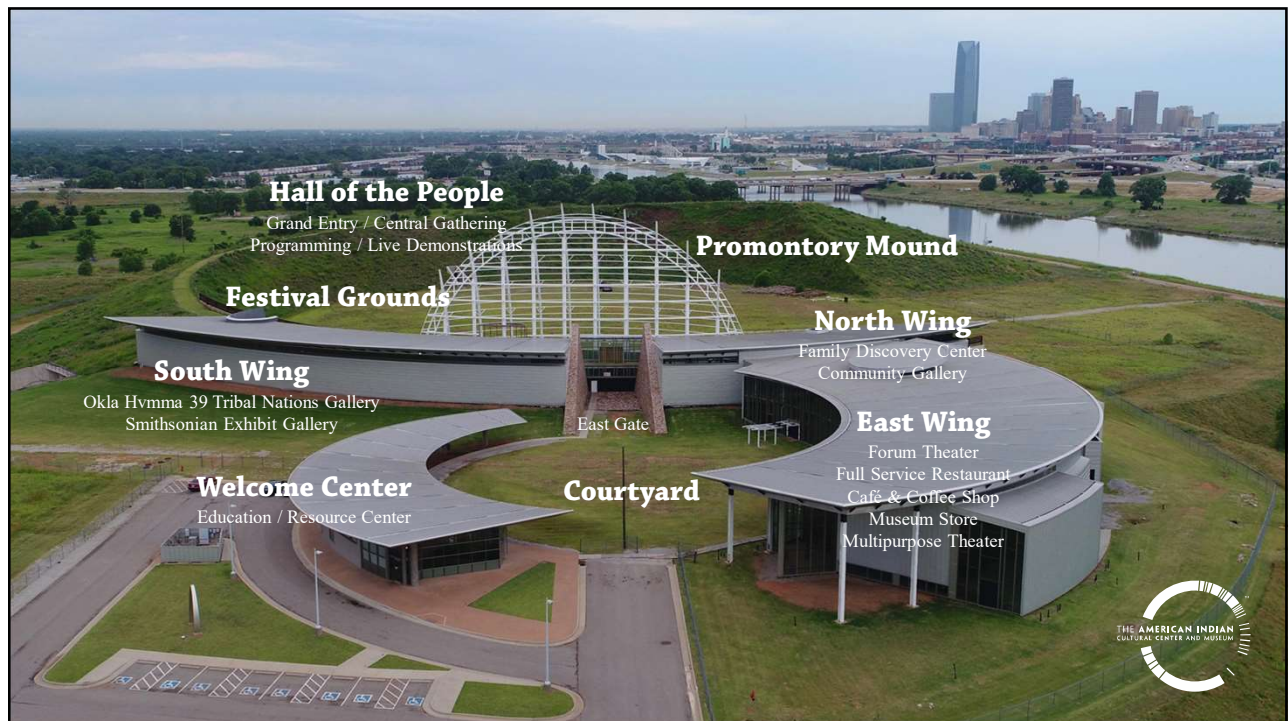
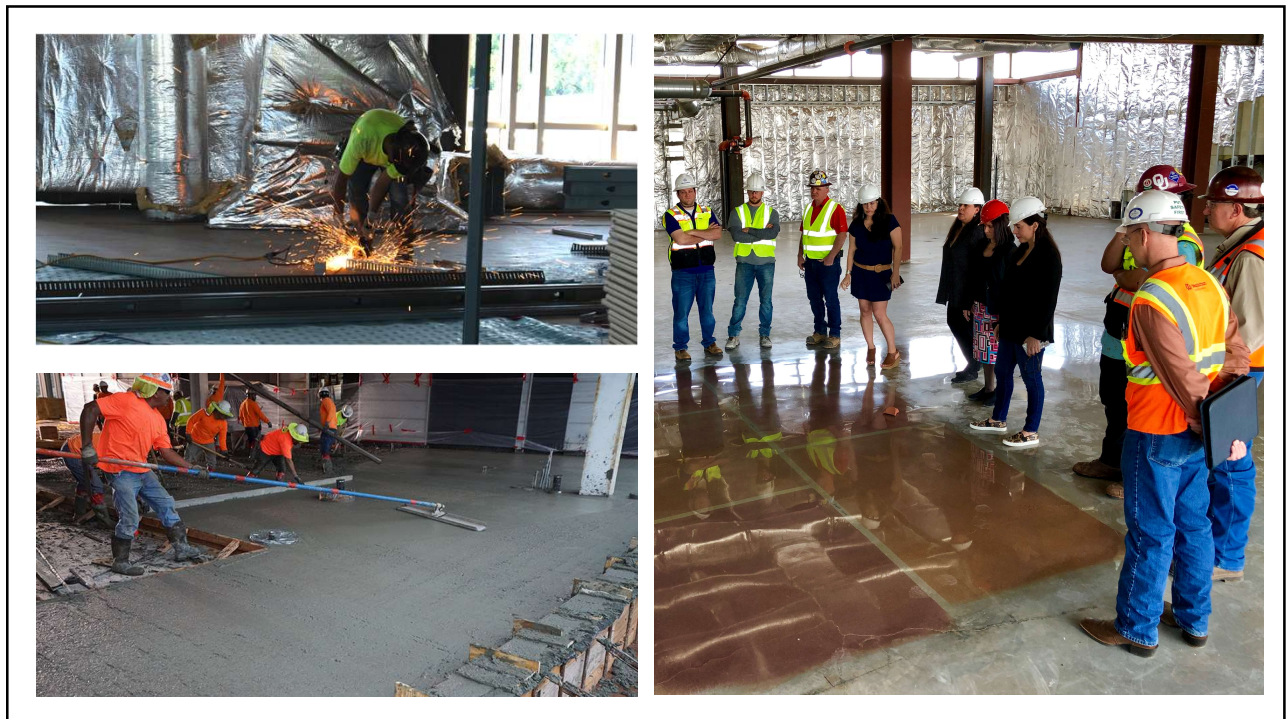




## CROSSROADS OF AMERICA







**East Gate**



**East Wing**



**Touch to Above**  
Bill & Demos Glass, Artists



**Winter Solstice**



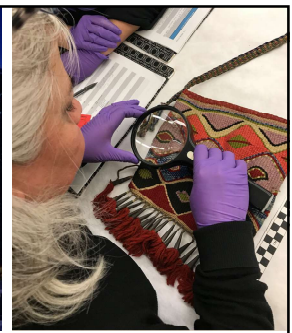
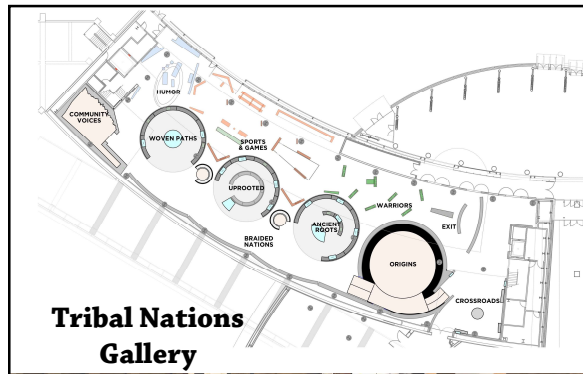
**Super Blue Blood Moon**

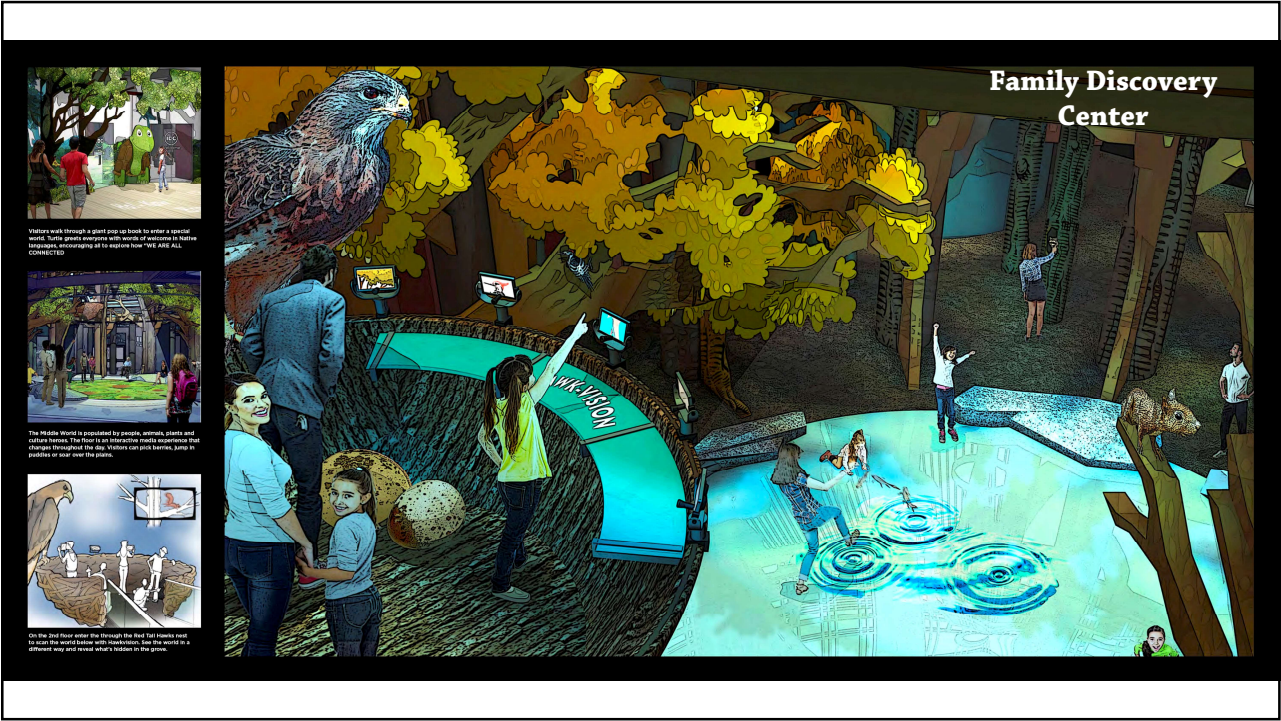


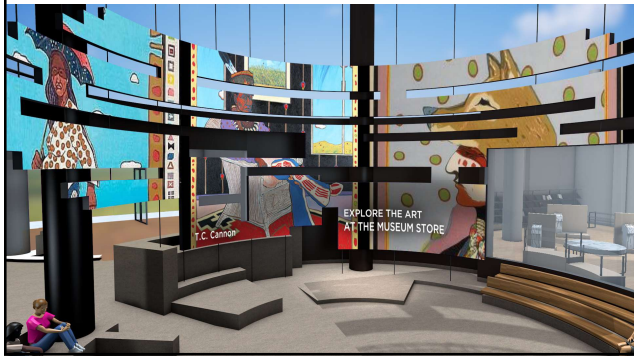
**Summer Solstice**



**Promontory Mound**













The American Indian Cultural Center and Museum

JOIN IN SHARING AMERICA'S HISTORY.

[DONATE](#)

[AICCM.ORG](http://AICCM.ORG)

An aerial view of the American Indian Cultural Center and Museum, a modern building with a curved roof and large glass windows. The building is situated on a grassy hill overlooking a city skyline. A large, colorful arch graphic, composed of many small, multi-colored segments, is superimposed over the right side of the image. The arch is primarily blue, yellow, and red.