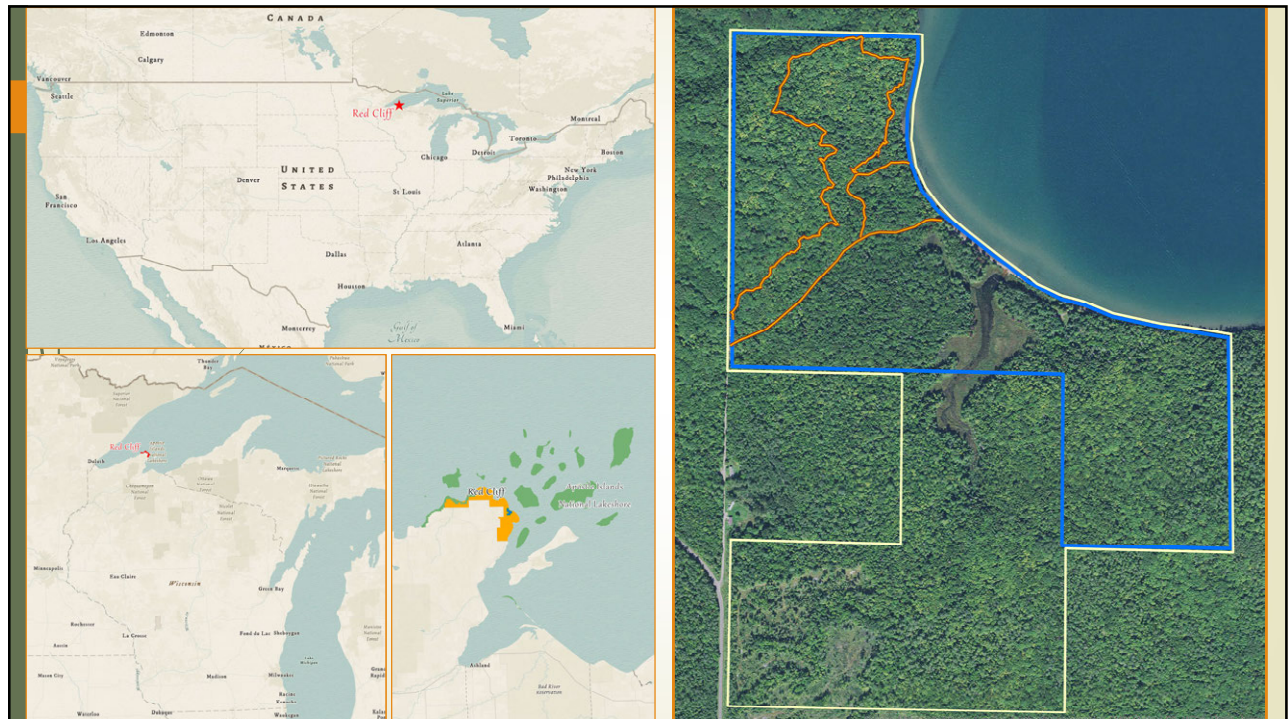


# Frog Bay Tribal National Park

Red Cliff Band of Lake Superior Chippewa

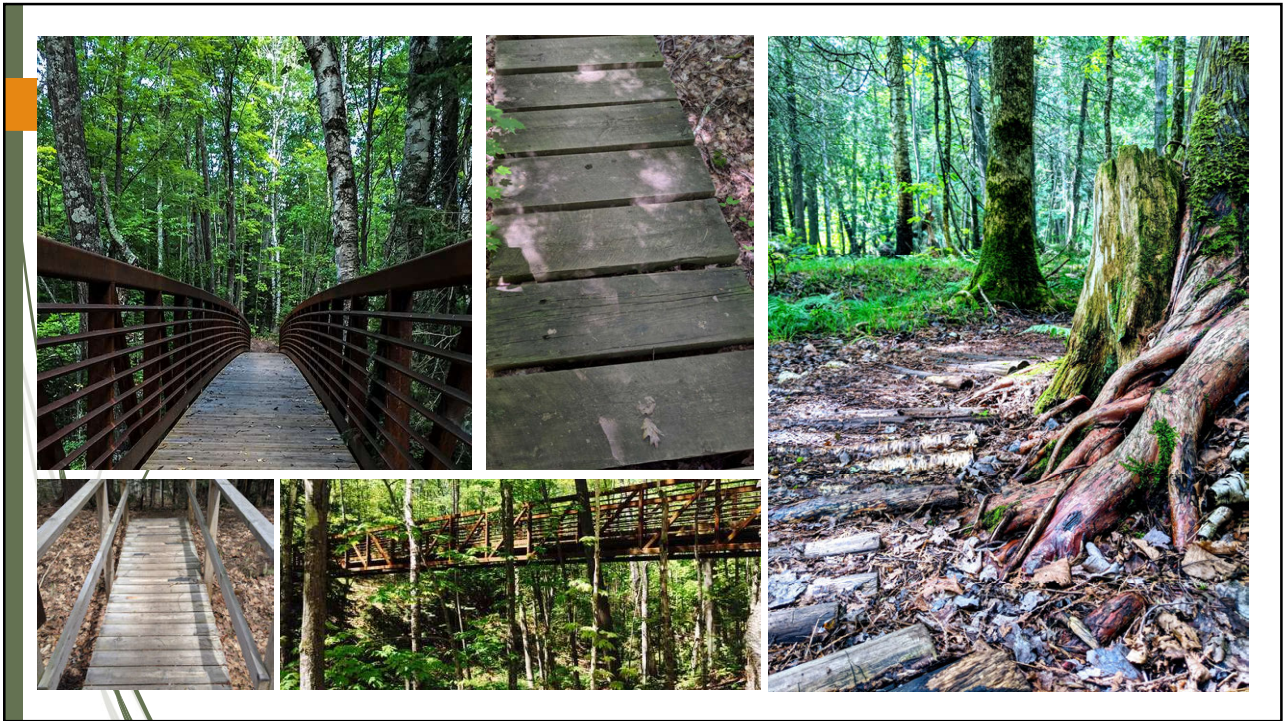
Gabrielle VanBergen, Deputy Administrator of Natural Resources





- 300 acre conservation area
- 2 miles of hiking trails
- Protects
  - 1 mile of riparian corridor
  - 118 acres of wetland and freshwater estuary
  - ¾ mile of undeveloped sandy Lake Superior shoreline

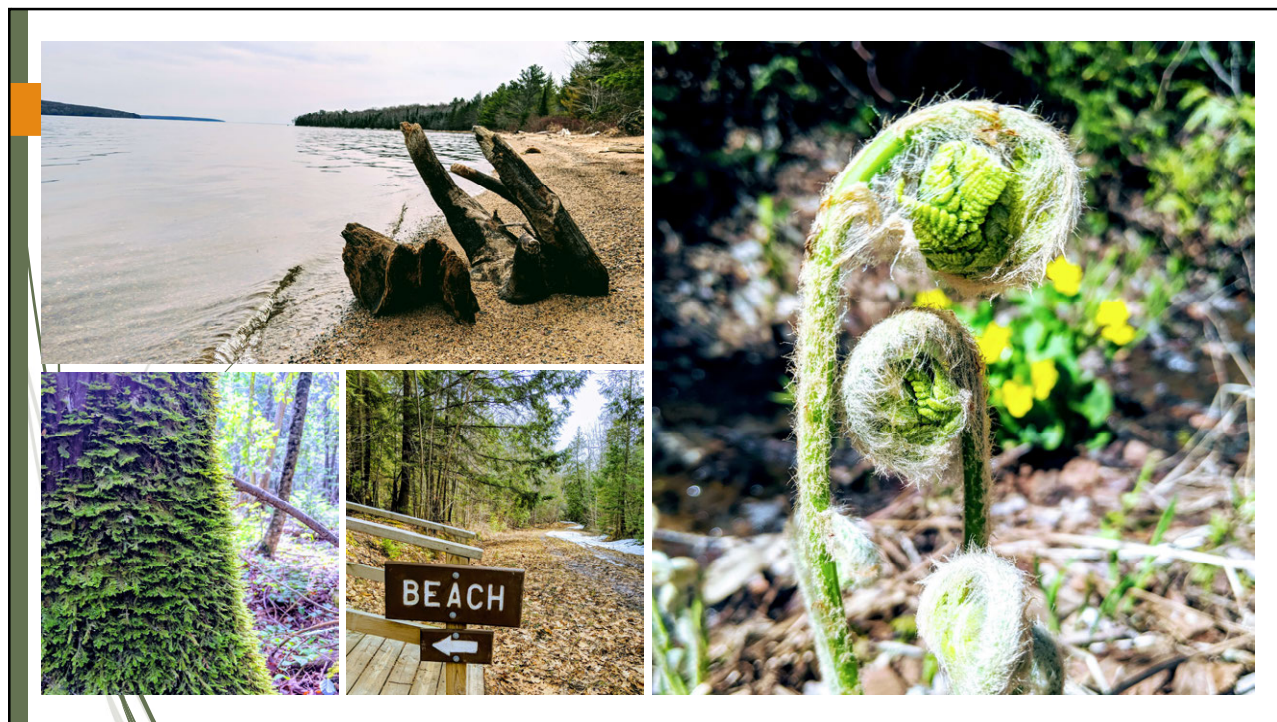
















# Miigwech! (Thank You)

<http://RedCliff-nsn.gov/Divisions/TNRD/FTNP>  
<http://Facebook.com/FrogBay>

Open Year Round  
 Sunrise to Sunset

